

NAME:

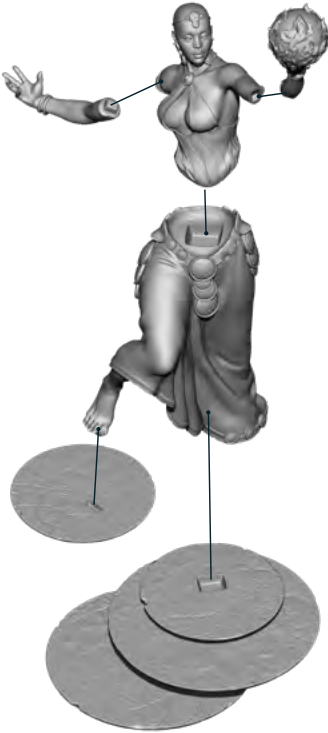
Rashida, Priestess of the Mystic Circle

SCALE:

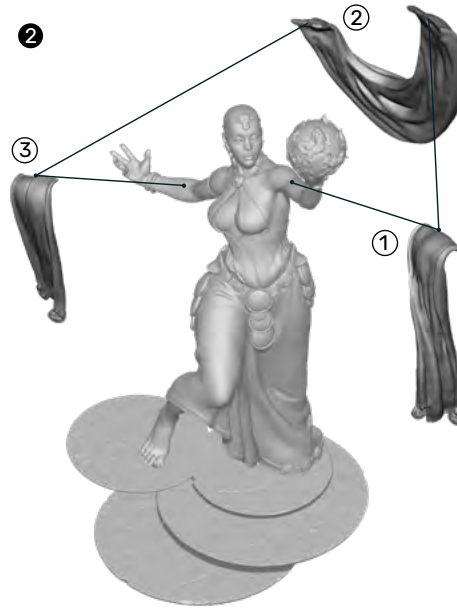
75 mm

Produced in Big Child Creatives high-quality resin
Unpainted model - Needs assembly

1



2



3



ASSEMBLY:

- 1 We join the feet to the circular supports. Then we attach the chest to the hips and finally we join the hands to the arms of the figure.
- 2 We join the scarf in the order indicated in the image.
- 3 Finally we glue the rosette on the back of the figure.

ASSEMBLY ADVICE:

- In case of needing it, bend parts can be straightened by applying hot air.
- Sprues can be cut with model pliers and sanded easily
- Pieces can be glued with cyanoacrylate glue.
- Paint can be applied directly on the resin, or if preferred, after a prime coat.

