



NAME:

Lady of the lake

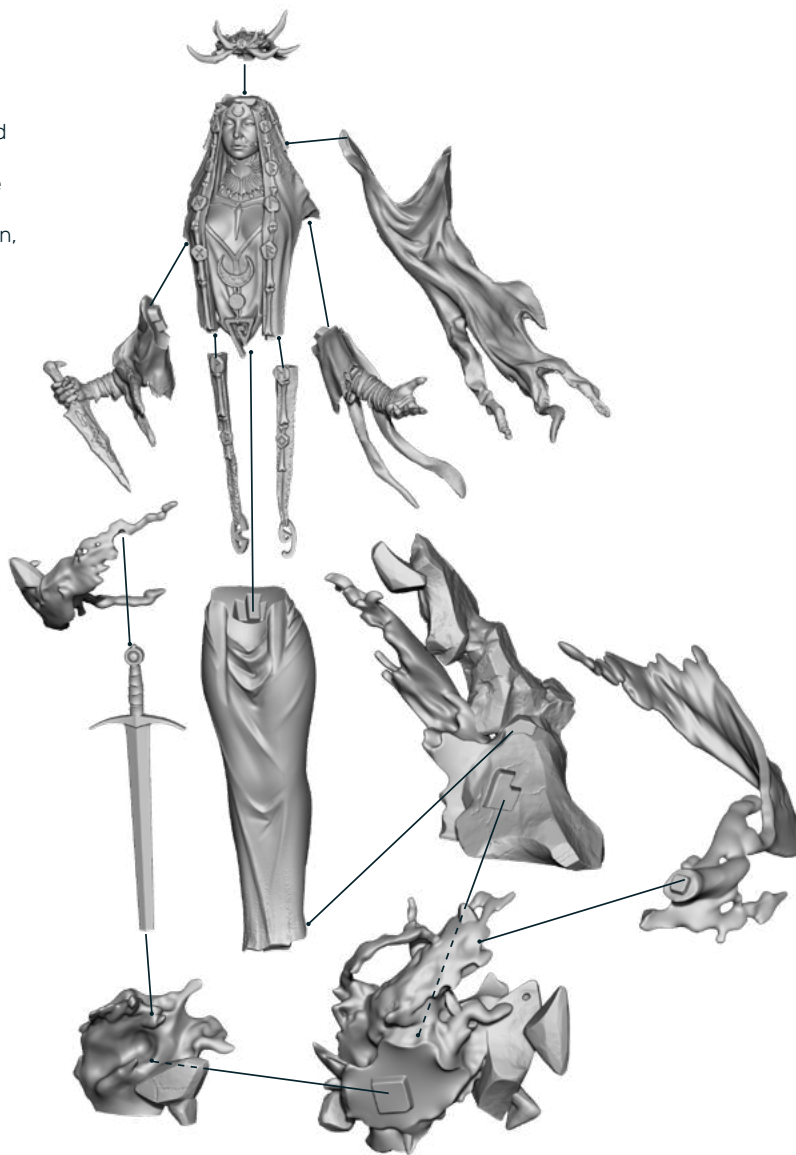
SCALE:

75 mm

Produced in Bigchild Creatives high-quality resin
Unpainted model - Needs assembly

ASSEMBLY ADVICE:

- In case of needing it, bend parts can be straightened by applying hot air.
- Sprues can be cut with model pliers and sanded easily
- Pieces can be glued with cyanoacrylate glue.
- Paint can be applied directly on the resin, or if preferred, after a prime coat.



WARNING: Not suitable for children under 36 months. Small parts. Essential pointed components